

PENSKE DRIVER™ APP — HOS MODULE

Quick Start Guide



This Quick Start Guide will help you get up and running with the Hours of Service (HOS) module of the Penske Driver app. For detailed information and instructions, visit gopenske.com/hos.

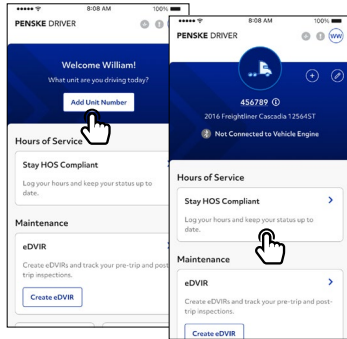
Before You Begin Logging Hours

- Make sure the Bluetooth® settings are enabled on your Android or iOS device.
- Location services need to be activated.
- Open and sign in to the app **before powering on your vehicle** to ensure ELD is functional.



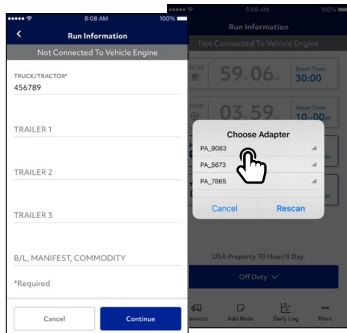
1 Signing In

Login to the Penske Driver app. From the home screen, add your unit and select "Hours of Service."



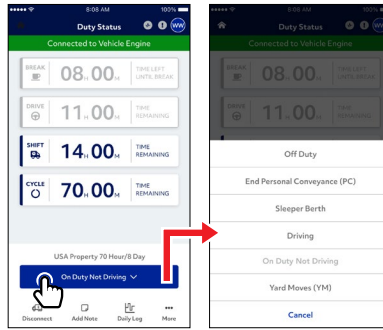
2 Connecting to Your Penske Truck

Tap "Connect" to enter Run Information which includes your truck/tractor number, trailer number, and B/L, manifest, or commodity details.



The adapter installed in your truck will appear in the list. Choose it to establish the ELD connection.

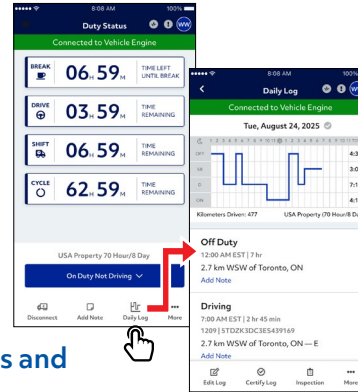
3 Changing Duty Status



The Duty Status screen displays your break, drive, shift and cycle timers as well as your current status and other options. To change your duty status, select the button labeled "Current Status" and make your selection.

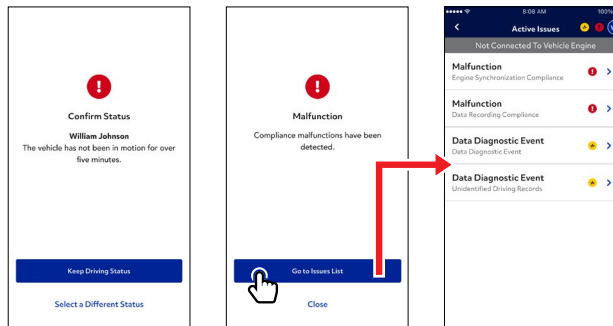
4 Viewing Hours of Service Log

The Hours of Service app will record all of your duty status changes and will automatically draw your graph throughout your day. To view your log, select "Daily Log" from the Duty Status screen.



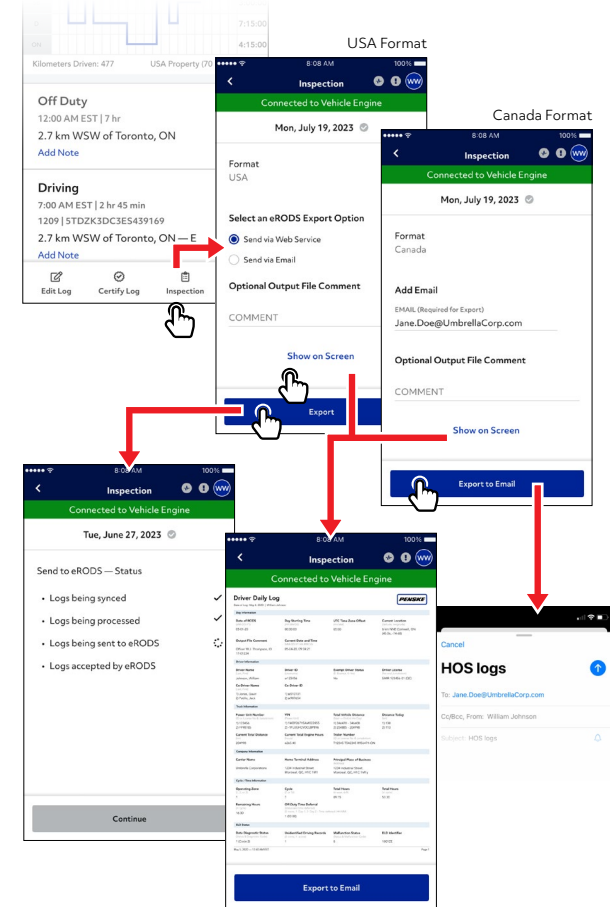
5 Showing Alerts and Malfunctions

If issues arise while you are using the app, alert notices will appear along with corresponding options. The app also features malfunction monitoring. If an error occurs, tap on "Go to Issues List" on the Malfunction screen to see what types of errors have occurred. Once a specific issue is selected, you will be able to view suggestions for troubleshooting.



Preparing for Roadside Inspection

In the event you are stopped for an inspection, select the "Inspection" option at the bottom of the Daily Log screen. You will then be able to choose between displaying your daily log on screen, sending to eRODS (USA) or emailing your log (Canada). Please choose the appropriate option per the request of the roadside inspector.



Both USA and Canada formatted logs can be viewed on the screen when the "Show on Screen" option is selected. USA formatted logs can be submitted directly to eRODS when the "Send to eRODS" option is selected. The "Export to Email" button allows Canada logs to be emailed to an email recipient when a valid email address is entered.