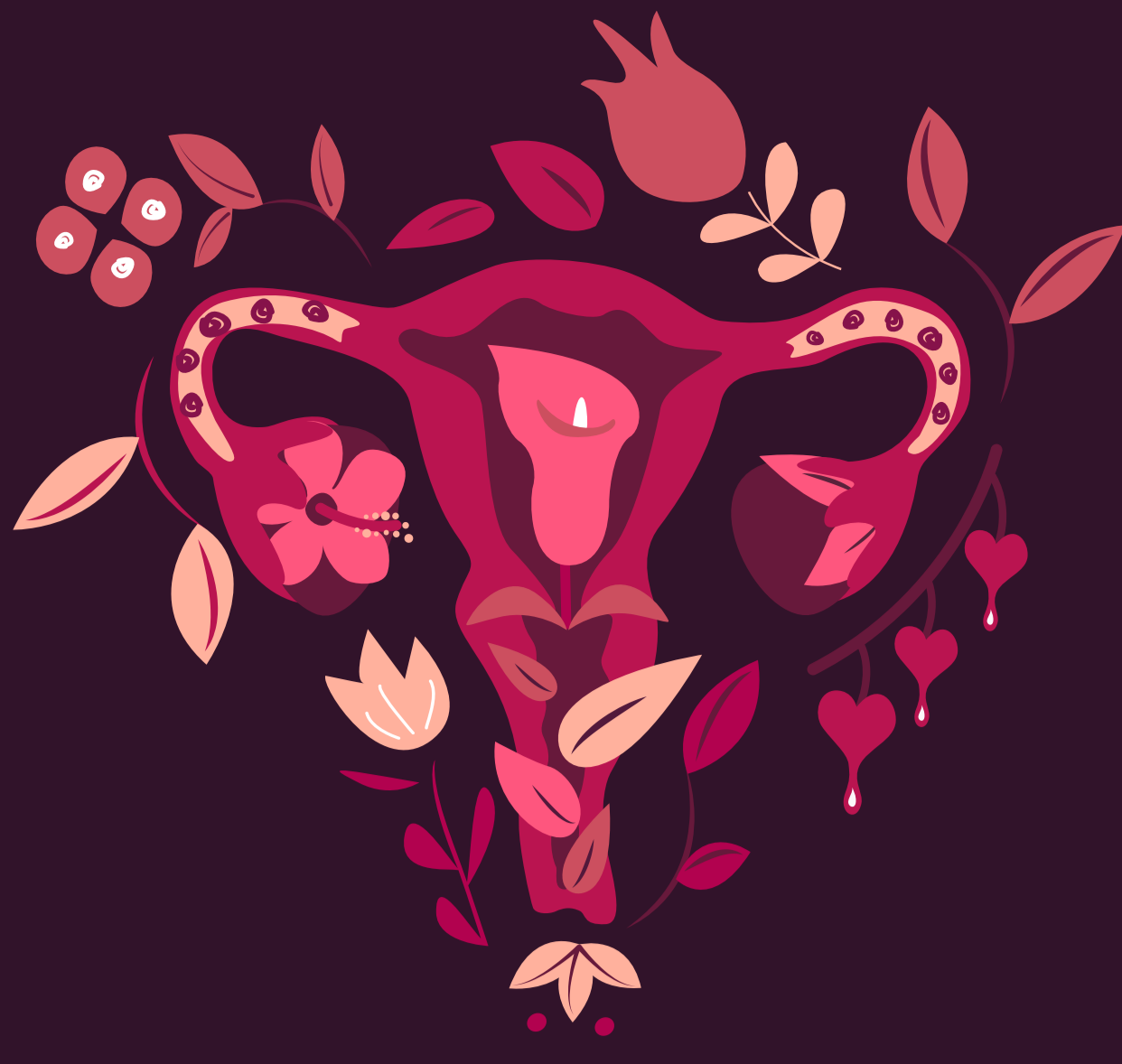


Why Menopause Happens Earlier for Some Women



Certain conditions are associated with early or premature menopause



What is menopause?

Menopause occurs when you've gone 12 months without a period.

Most women experience menopause between the ages of 45 and 58.

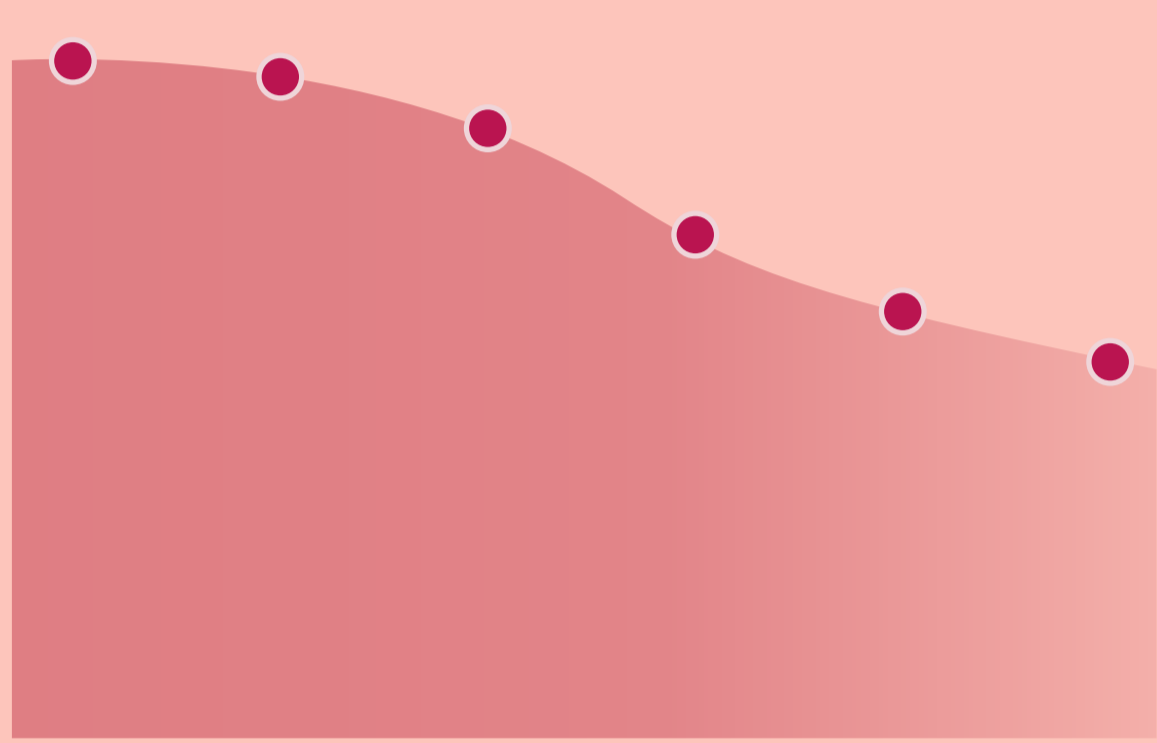


The average age of menopause in the U.S. is

51

Natural menopause

The decline in female hormones that happens naturally with age.



Induced menopause

When medical treatments like cancer treatments or surgery temporarily or permanently shut down the ovaries so they no longer make estrogen and progesterone.



Induced menopause happens quickly — within a few weeks or even overnight — and can cause early or premature menopause.

Premature menopause

Menopause before age 40

Affects about

1% of women

Early menopause

Menopause before age 45

Affects about

5% of women

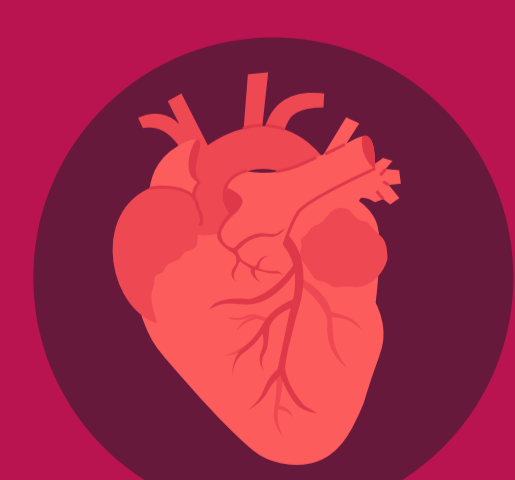


Factors that cause or are associated with premature or early menopause

- Autoimmune conditions
- Thyroid disease
- Crohn's disease
- Scleroderma
- Chronic fatigue syndrome
- HIV/AIDS
- Epilepsy
- Genetic disorders
- Family history of early/premature menopause
- Smoking

Risks of early or premature menopause

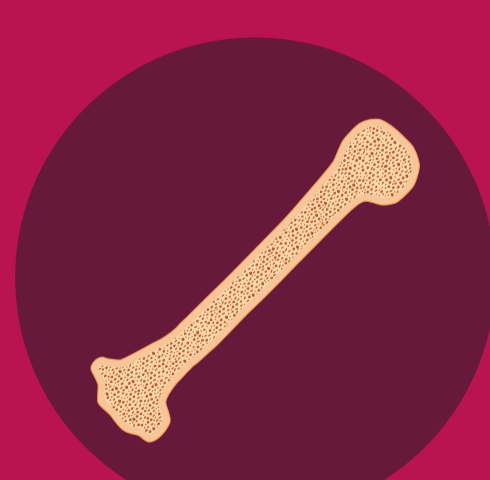
Living longer without the health benefits of higher estrogen levels may increase your risk for health problems like:



Heart disease



Stroke



Osteoporosis



Dementia

Talk to your healthcare provider about your risk

If you think you may be at risk for early or premature menopause, talk to your healthcare provider. Together you can figure out a plan.