



# Lung Cancer Symptoms

What are the symptoms of lung cancer in the early and late stages?

Lung cancer may not cause any symptoms, especially in the early stages of disease.

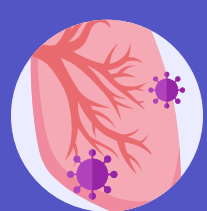
## When there are symptoms, early signs may include:



A cough that does not go away



Coughing up blood or rust-colored spit



Frequent lung infections, like bronchitis or pneumonia



Chest pain that gets worse with deep breathing, coughing, laughing



Changes in your voice/hoarse voice



Shortness of breath



Wheezing



## Late signs may include:



Shoulder pain



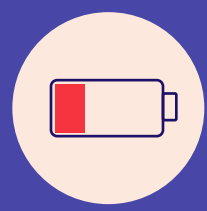
Arm pain



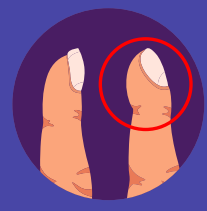
Unexplained weight loss



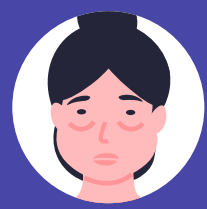
Loss of appetite



Feeling unusually weak or tired



Change in the look of fingertips and nailbeds



Neck or face swelling

## If lung cancer spreads to other parts of the body — called advanced or late stage disease — symptoms may include:



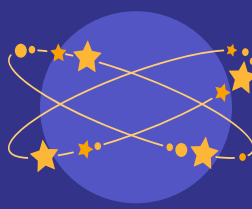
Bone pain



Jaundice (yellowing of the skin and eyes)



Headache



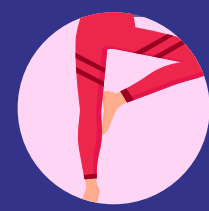
Dizziness



Seizures



Weakness or numbness in limbs



Trouble walking or balancing



Swollen lymph nodes in the neck or above the collarbone

These symptoms may be caused by many other conditions as well. If you have any of these symptoms, make an appointment with your healthcare provider.

