

## PENSKE DRIVER™ APP — HOS MODULE

# Quick Start Guide



This Quick Start Guide will help you get up and running with the Hours of Service (HOS) module of the Penske Driver app. For detailed information and instructions, visit [gopenske.com/hos](http://gopenske.com/hos).

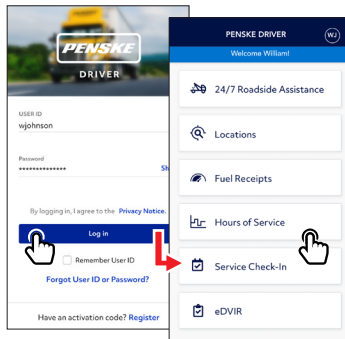
## Before You Begin Logging Hours

- Make sure the Bluetooth® settings are enabled on your Android or iOS device.
- Location services need to be activated.
- Open and sign in to the app **before** powering on your vehicle to ensure ELD is functional.



## 1 Signing In

Log in to the Penske Driver app and select "Hours of Service" from the menu of options.

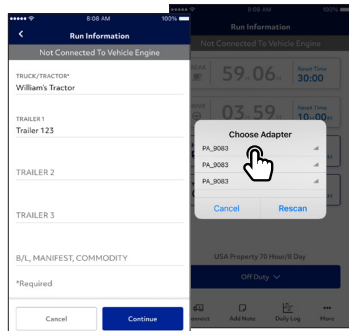


## 2 Connecting to Your Penske Truck

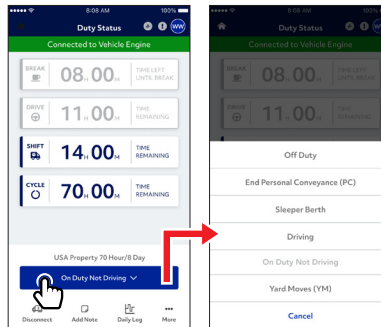
Look for the Hours of Service sticker on the dashboard. The name of the Bluetooth® adapter installed in the truck will appear there.



Once you select "Connect to truck" you will be able to enter "Run Information" which includes your truck/tractor and trailer unit numbers as well as your B/L, manifest or commodity information.



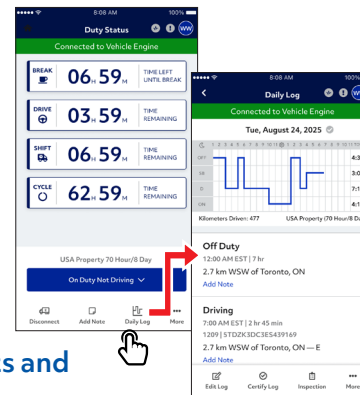
## 3 Changing Duty Status



The Duty Status screen displays your break, drive, shift and cycle timers as well as your current status and other options. To change your duty status, select the button labeled "Current Status" and make your selection.

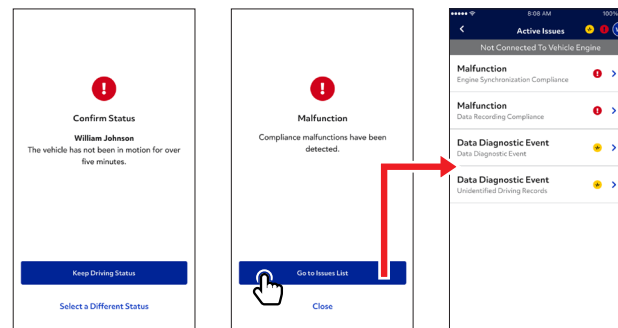
## 4 Viewing Hours of Service Log

The Hours of Service app will record all of your duty status changes and will automatically draw your graph throughout your day. To view your log, select "Daily Log" from the Duty Status screen.



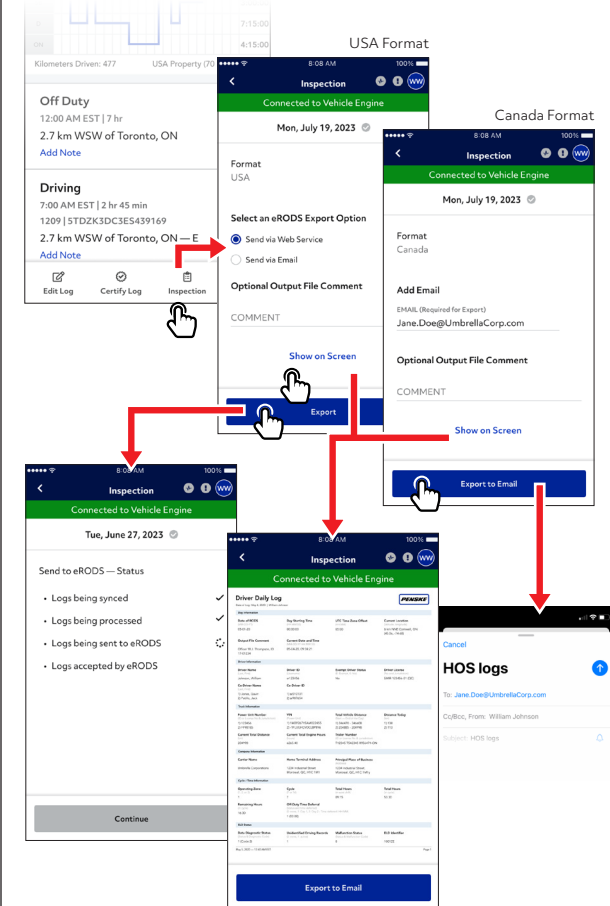
## 5 Showing Alerts and Malfunctions

If issues arise while you are using the app, alert notices will appear along with corresponding options. The app also features malfunction monitoring. If an error occurs, tap on "Go to Issues List" on the Malfunction screen to see what types of errors have occurred. Once a specific issue is selected, you will be able to view suggestions for troubleshooting.



## Preparing for Roadside Inspection

In the event you are stopped for an inspection, select the "Inspection" option at the bottom of the Daily Log screen. You will then be able to choose between displaying your daily log on screen, sending to eRODS (USA) or emailing your log (Canada). Please choose the appropriate option per the request of the roadside inspector.



Both USA and Canada formatted logs can be viewed on the screen when the "Show on Screen" option is selected. USA formatted logs can be submitted directly to eRODS when the "Send to eRODS" option is selected. The "Export to Email" button allows Canada logs to be emailed to an email recipient when a valid email address is entered.